



THIS WEEK IN TRAINING

FIRE & EMERGENCY EVACUATION PLAN 450

MORELAND RD

From time to time, certain types of occupancies require a Fire Safety and Evacuation Plan either approved by or written by a Code Official. 450 Moreland Rd is one such place. With a maximum occupancy of 440 people a fire in that building could be catastrophic. That being said I wrote a plan for them which tentatively goes into effect this week. This article will contain only the things we need to know as a fire department. Yes the building *is* in Commack but I do believe it's just a matter of time before a fire occurs there.

THIS WEEK IN TRAINING

FIRE & EMERGENCY EVACUATION PLAN 450 MORELAND RD

Building Description

450 Moreland Rd is a 2 story Type I & II transient hotel/motel for indigent people who get aid in housing from the State of New York through a private housing management company that is contracted by the state and county to run the facility. The building is owned by a completely different company so building maintenance employees are not employees of the housing management company. Right now the complex in total has 110 sleeping rooms with various offices and utility rooms. The sleeping portions of the buildings have concrete floors and a concrete roof...think “Yaphank “, with furniture. The wings are now labeled Wings A thru C and eventually over every door leading into a wing will be a sign with the corresponding wing letter over the door. The eastern wing is the A Wing which runs parallel to Moreland Rd. The B wing is the middle wing which runs

between the three wings and the C Wing is the western most wing which runs along the rear parking lot



(Fig.1). The stairwells in each wing are now going to be labeled as well. For example the stairwells in Wing A are labeled A1 and

TACTICS

This week I will be sitting with Chief Babajko to go over what his tactical considerations for this complex will be and I will try to convey them in a plan. This will be the topic of next week’s article...

“Let No Mans Ghost Say His Training Let Him Down”

A2. The inner rooms that face the courtyard in all wings are bigger rooms that can hold up to 5 people. In every wing, the outer rooms that face out to the outside of the complex are smaller and can accommodate up to 4 people. The courtyard can be accessed from the south driveway should you have a fire located in an inner room. Every room has a sliding glass door that leads to the exterior however these are plate glass and they are screwed shut. (No, there is nothing in the code that says it's not ok to lock those doors off). The second floor rooms have a balcony off of every room however the occupants have no access to them unless they break the glass on the slider, which in the event of an actual fire, I would bet the farm will happen. The new fire alarm system is a point to point system which essentially means every device communicates directly with the panel so you know exactly where the detector that went off is located. The fire alarm control panel (FACP) is in the electrical utility room on the corner of the B & C Wings and the door is marked. There is also a remote annunciator located at the front desk in the lobby on the corner of the A & B Wings. Next to the FACP room is the building laundry rooms for the linens and a break room. There are two private hydrants located on the property. One is on the northeast corner of the A Wing where it connects with the lobby. The other is at the end of south driveway where you enter the courtyard. On the south side you *might* be able to squeeze an engine by the building to get to the rear lot, but it's iffy and there is no driveway access to the rear from that side.

“Wing A” The first 2 rooms on the first floor of the A Wing are a daycare known locally as “The Drop-In Center”. These two rooms are interconnected and open to each other with sliding glass doors that lead out to the courtyard. These doors operate fully and are not screwed closed as they

are the primary exit for the center in the event of a fire. This daycare can hold a maximum of 12 kids with an employee for every 6 children (Fig.2). The A Wing has a stairwell at each end leading to and from the 2nd floor. The



Figure 2

northern stairwell is the A1 stairs and the southern stairwell is the A2 stairs. This wing has no access to the other wings from the second floor. It is connected by the 1st floor only and it dead

ends at the stair wells (Fig.3). There are 15 sleeping rooms and a 2 room day care on the 1st floor. There are 17 sleeping rooms on the 2nd floor.

In-Between The A Wing and the B Wing on the 1st floor is the lobby and front desk where the remote fire alarm annunciator is, and when looking at the front desk, to the left is the occupant intake lobby and 2 main offices



“Wing B” Is the Center wing that faces north. The majority of the people evacuating from this wing are going to be coming out the lobby doors and the B1 stairwell doors by the lobby on the B & A corner. The reason for this is that there is only one stairwell directly down from the 2nd floor of this wing. This wing

is attached on the second floor to the C Wing but taking into account travel distance its closer for most rooms to evacuate through the aforementioned stairwell rather than travel down the hall around the corner to the C Wings C1 stairwell. Also this could impede the evacuation of the C Wing with the extra occupant load going down the stairs. This wing is also smaller than the other two wings with less occupant capacity. There are 14 sleeping rooms on the 1st floor with a workshop and storage room on the wing B&C corner and 15 sleeping rooms on the 2nd floor. This wing is not connected to the A Wing on the 2nd floor but is connected to the C Wing by a long narrow hallway.

In-Between the B & C Wings on the 1st floor is the FACP/electrical utility room, the buildings laundry room along with a break room and some storage rooms/closets

“C Wing” is the western most wing, with vehicle access only from the north driveway/parking lot. On the 1st floor there are 24 sleeping rooms and on the 2nd floor there are 25 sleeping rooms. There are stairwells at each end of the wing with the northern stairwell being C1 and the southern stairwell being C2. On the 1st floor of this wing on the southern end, the hallway floor rises up 3 steps from the rest of the hallway and is that way all the way out the southern door.

The Evacuation Plan

The evacuation plan is 15 pages long but only a small portion of it pertains to the fire department. It not only covers evacuation but everything from a “Fire Watch” to Fire Wardens. To ensure a safe evacuation when the fire alarm activates, and to ensure accountability for all occupants, the following steps are taken:

1. The alarm sounds and an announcement is made over the buildings PA system to evacuate
2. There are fire wardens in each wing taking attendance from a current list as to who has left the building and who hasn't evacuated
3. Everyone evacuates to the “Evacuation Assembly Area” across from the lobby on the grass in the north parking lot along the fence (Figs.2&4)
4. The Fire Wardens hand there accountability sheets to the Head Fire Warden at the parking lot entry gate at the Evacuation Assembly Area upon the completion of the evacuation
5. The Head Fire Warden will meet the first arriving fire department unit at the entry gate with the paperwork that will contain a list and floor plans with a circle around the rooms where people are unaccounted for and if possible an X where the device is located that activated the fire alarm
6. The building maintenance people live on site and someone is usually in the building 24/7/365. They will also respond to the area of the detector that activated the alarm and they can be extremely helpful to the fire department in being directed where to go upon arrival

It should be noted that **the fire alarm is not to be reset OR silenced until the fire department gives the ok** to do so. If upon arrival you're told its burnt popcorn, it would probably be a good idea to silence the alarm on arrival. This can be done either from the



remote at the front desk or the main panel in the FACP room (Fig. 4)

Conclusion

Tactically this building can have a multitude of scenarios to contend with. There are many different options for attacking a fire as there are many different areas a fire could occur. The one thing this building has going for it is the fact that it is a bunch of concrete boxes. Fire extension in building of this nature is going to come via the failed glass in the patio doors or via a room door that somehow got left open. The major issue will be smoke. This should be somewhat controlled early on during the evacuation by the electro-magnetic fire doors but by the time we arrive, set up, stretch a line and get water, the doors will likely be overwhelmed by the smoke condition. There are way too many tactical concerns to mention at this point but one major concern will be the possibility of a wind driven blowtorching fire once the apartment door is opened and the glass slider fails. This means that “door control” will be crucial no matter what the scenario.

The plan will not be able to be printed out for you to take from the station but what will print out are the 1st and 2nd floor plans with room numbers. Make sure you wait for and take this printout. The floor plans and the full evacuation plan will be available for viewing on the MDT under the images tabs as well as an aerial view. All of this too will be available for viewing and printing in a PDF form on the website as well.

If you are 1st due, find the Head Fire Warden at the evacuation assembly area by the front gate and get their report. Upon receiving the report, give a radio report of what you know from what the Head Fire Warden has told, shown and given to you. If you're 2nd due, listen to the report of the 1st unit and look at your floor plans to come up with a possible strategy in anticipation of what the Incident Commander is going to want to do.

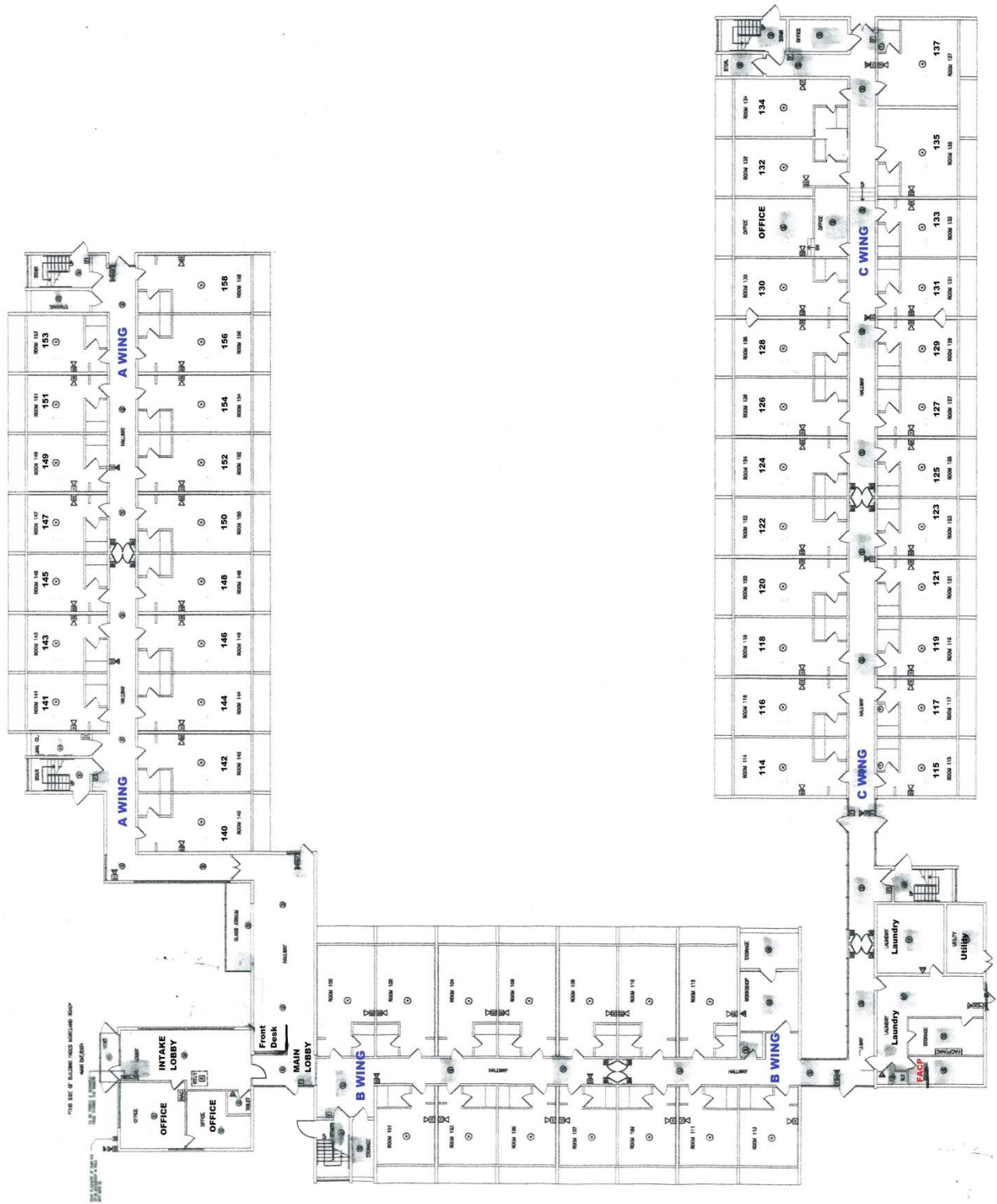
A few weeks ago I had them do an unannounced fire drill. They had the building evacuated, all three wings, almost 400 people in around 3&1/2 minutes. This building and its employees are coming around. The new fire alarm system and the Fire Safety & Evacuation Plan are both great ways to increase fire safety and are big steps in the right direction but you can have the best employees in the world, if a fire is going to occur, it's going to occur no matter who's working at the time. The cause of a fire in this building will likely not be an employee and there is a definite possibility of an arson fire there as well.

I truly believe that there will be a fire in this building, not if but when it occurs, know ahead of time the layouts, listen to radio reports and bring the printouts...

Thanks for reading and have a safe week...

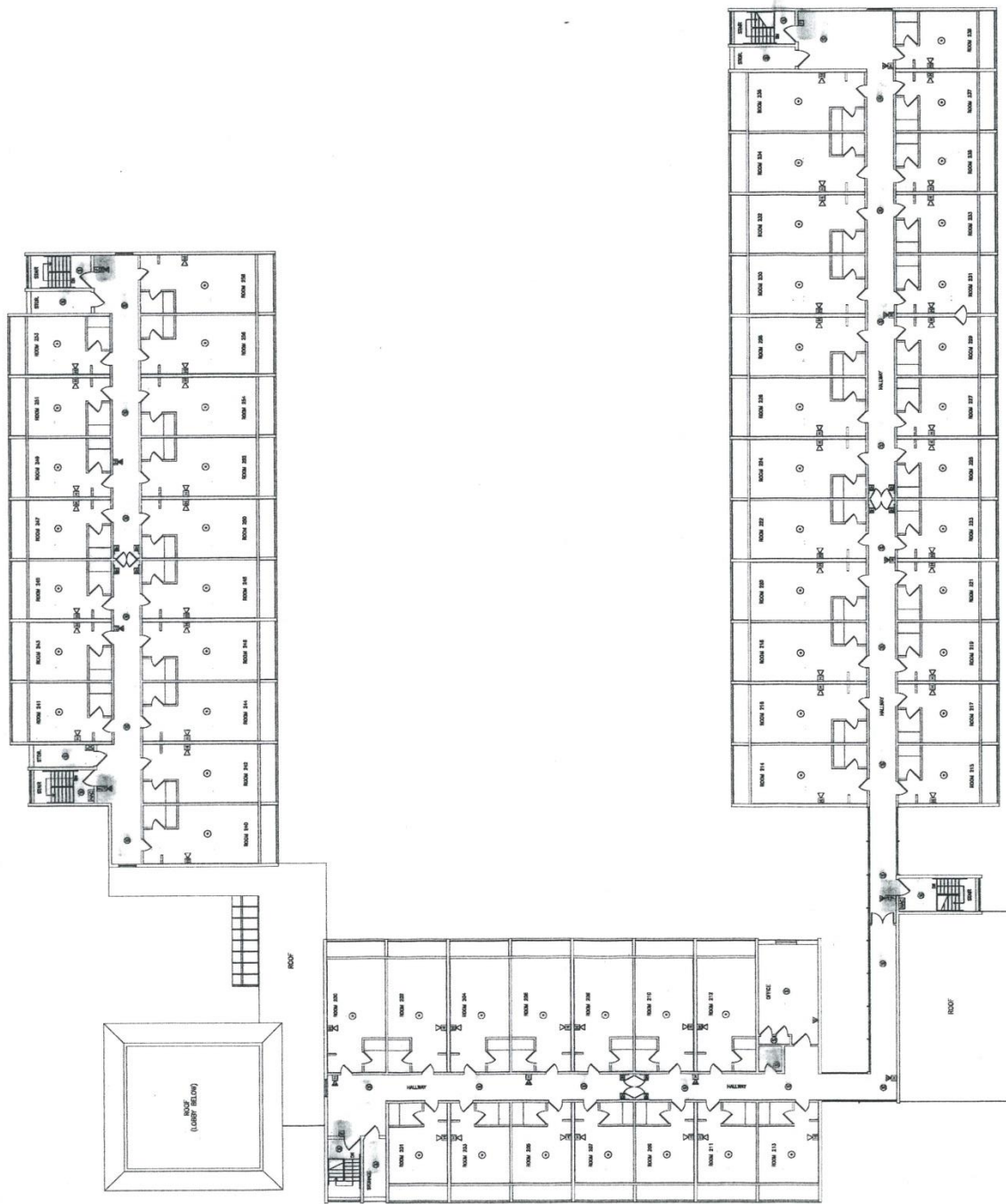
Fire Marshal Digiose

See Floor plans on following pages



OFFICE, 8'-0" CELLING TILE THROUGHOUT BUILDING
ERST FLOOR PLAN
 SCALE: 1/4" = 1'-0"

1st Floor Layout



TYPICAL 8'-0" CEILING TALL THROUGHOUT BUILDING
 KPA SECOND FLOOR PLAN

2nd Floor Layout